

CORFLUTE BOARD - MD (MEDIUM DUTY)

PRODUCT SHEET



PRODUCT DESCRIPTION

Corflute Board MD (Medium Duty) provides impact protection for any construction site. The boards are lightweight, while offering protection from heavy foot traffic, ladders, trolley's and dropping objects.

Suitable for use on internal projects.

FEATURES & BENEFITS

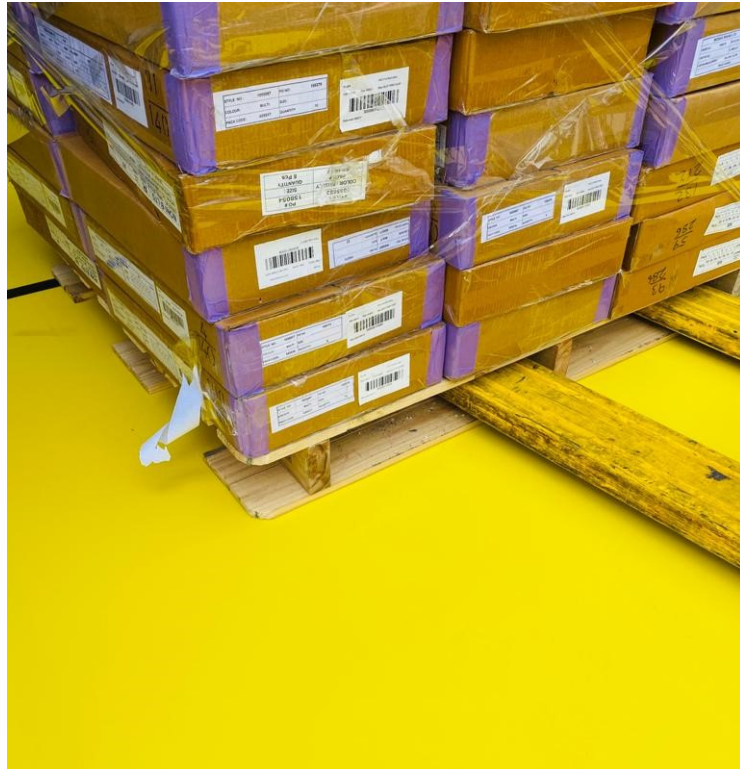
- Impact protection
- Ideal for vertical surfaces such as doors, hallways and joinery
- Easy to cut and mould around different shapes
- Reusable
- Lightweight and versatile
- Water resistant
- Protects surfaces from stains
- Slip-rated (P2)
- Prevents dust and dirt from scratching the surface
- Fast & easy installation and removal

USES & LIMITATIONS

- Cured Concrete*
- Porcelain & Ceramic Tile
- Epoxy Flooring
- Hardwood Floors*
- Most Stone Tiles*
- Sheet Vinyl & Laminate
- Vertical Surfaces/Countertops
- Over Waterproof membranes
- Not to be used as a Structural Board
- Suitable for general protection on commercial and residential projects. Internal projects only.

SPECIFICATIONS

- Board Size: 110 x 220 x 0.3cm
- Square Meterage 2.42sqm/board
- Colour: Safety yellow
- Board Weight: 3.63kg - 1500 gsm
- **Product Code: HCFMD15**
- Available loose or in packs of 10



Water Resistant



Prevents Stains



Impact Protection



Heavy Foot Traffic



Easy to install

Disclaimer: *Speak with your Honcho representative to confirm substrate suitability. Customers are advised to consider the information in this data sheet in the context of how the product will be used, including surfaces and any other products used. The information provided in this guide represents our best scientific and practical knowledge. Any advice, information or assistance provided by Honcho Supplies in relation to its products is given in good faith, however is provided without liability or responsibility. Due to the wide variety of site conditions we are unable to assume liability for any loss that may arise from the use of our products. The user is responsible for checking the suitability of products for their intended use.

CORFLUTE BOARD - MD

INSTALLATION GUIDE



INSTALLATION STEPS

1. Lay out boards in a brick-style format
2. Boards to be laid firmly against each other
3. Apply Gorilla Tape to the seams to keep boards in place. Please refer to images on the right.

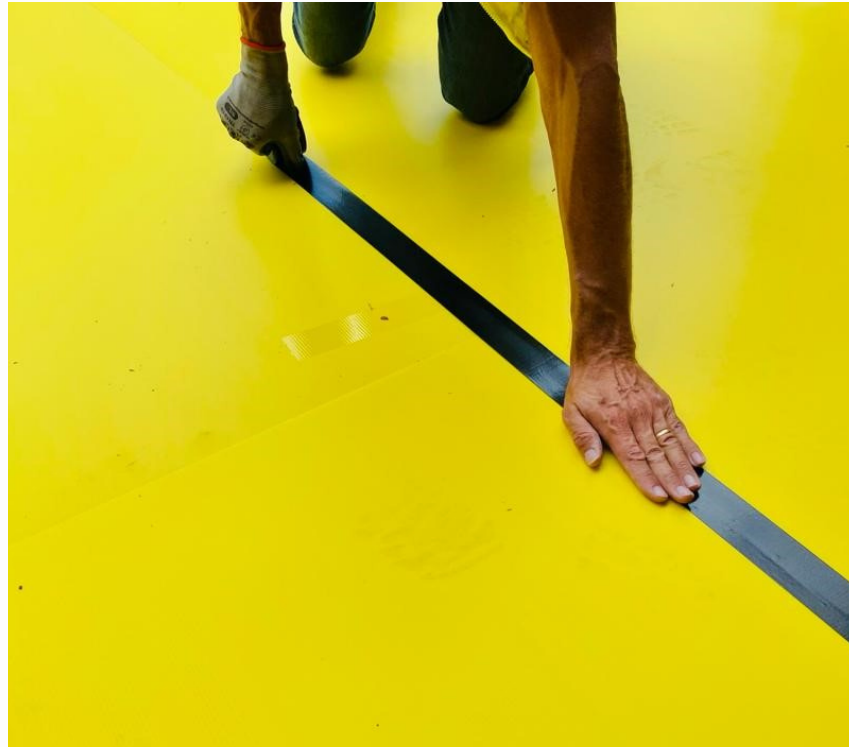
CUTTING THE BOARDS

1. Use a sharp stanley knife
2. For installation on stairs or corners, score, snap and fold the boards

TAPING/SECURING THE BOARDS

We recommend using Gorilla Tape to secure the boards together. Gorilla Tape is available for purchase through Honcho Supplies.

We also recommend sufficiently weighing down the boards when used externally to minimise risk of displacement due to wind and extreme weather events



Disclaimer: Customers are advised to consider the information in this data sheet in the context of how the product will be used, including surfaces and any other products used. The information provided in this guide represents our best scientific and practical knowledge. Any advice, information or assistance provided by Honcho Supplies in relation to its products is given in good faith, however is provided without liability or responsibility. Due to the wide variety of site conditions we are unable to assume liability for any loss that may arise from the use of our products. The user is responsible for checking the suitability of products for their intended use.