



Pallet Forks - The safest on the market

Digga's pallet forks with floating tyne design offer unrivalled quality and safety for skid steer loaders.

Features:

- Australian made frame designed from quality steel.
- Load rating tested to Australian Standard AS 2359.1
- Floating tyne design for increased safety.
- Easy quick fit attachment for most skid steer loaders.
- Easy width adjustment.
- 1200kg, 1600kg and 1900kg load ratings available.

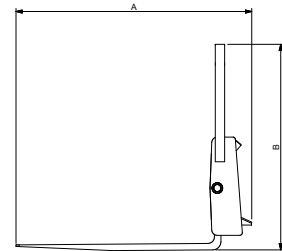
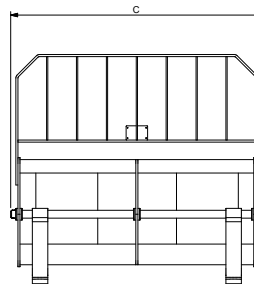


Digga Bale Spears/Pallet Fork combo frame also available to pick up bales with minimum effort.



Machine Suitability:

Skid Steer Loaders, Front End Loaders and Telehandlers



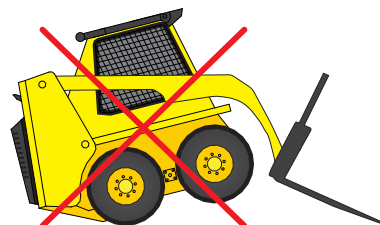
Specifications	900kgs	1200kgs	1600kgs	1900kgs
Length (A)	1270mm	1270mm	1270mm	1270mm
Height (B)	1120mm	1120mm	1120mm	1120mm
Width (C)	1224mm	1224mm	1224mm	1224mm
Weight	110kgs	110kgs	125kgs	173kgs

FLOATING TYNE DESIGN

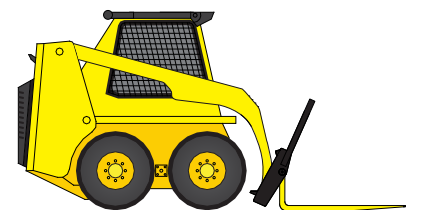
A floating tyne design offers unparalleled safety for skid steer loaders. Unlike forklifts, skid steers are able to crowd their pickup past horizontal allowing the machine to be placed in an unsafe position which could cause it to tip over. Digga's pallet fork design allows the tynes to swing freely from a single fixed point ensuring load and operator safety. Furthermore the design prevents the machine's weight to be placed on the tynes which could cause them to break.

IF YOU CARE ABOUT SAFETY THEN A FLOATING TYNE DESIGN IS THE ONLY SAFE CHOICE FOR SKID STEER LOADERS

FIXED TYNE PALLET FORKS



DIGGA PALLET FORKS



Contact your local professional dealer or contact Digga direct

THE BEST DOWNUNDER

PHONE: 1300 2 DIGGA EMAIL: info@digga.com WEB: www.digga.com

DIGGA

QLD, NT
4 Octal Street
Yatala QLD 4207

NSW, ACT
Unit 2, 36 Bluett Drive
Smeaton Grange NSW 2567

VIC, SA, TAS
27 Metcalf Street
Dandenong VIC 3175

WA
6/15 Yampi Way
Willetton WA 6155

