



DATA SHEET

TELESCOPIC BELT CONVEYOR TB130

PUTZMEISTER Telebelt® TB130 Telescopic Belt Conveyor



* Truck image is for illustrative purpose only and may vary depending on truck specification and dimension.

Technical Data

CONVEYORS				OUTRIGGERS			
Feed Conveyor	length	m	11.60	Net reach beyond outriggers	at 0°	m	36.81
Feed Conveyor Belt	width	hm	457		at 29°	m	31.99
Horizontal Reach Maximum	at 0°	m	38.56	Outrigger Spread L-R Front Hydraulic Extend Out/Down		m	8.46
	at 29°	m	33.74	Outrigger Spread L-R Rear Hydraulic Extend Out/Down		m	8.84
Trunk/End Hose Length		m	4.57				
Discharge Height from grade	at 29°	m	20.81				
	at -15°	m	-7.86				
Rated Capacity up to Main & Feed Conveyors	0°	m ³ /min	4.60				
		m ³ /hr	275				
Rated Capacity up to Main & Feed Conveyors	20°	m ³ /min	2.90				
		m ³ /hr	175				
GENERAL SPECIFICATIONS				TRUCK SPECIFICATIONS**			
Water Tank Capacity		L	644	Weight	kg		10,124
Hydraulic Oil Tank Capacity with Cooler		L	492	Engine Horsepower	kW		302
				Wheelbase	mm		7,925
				Cab Height	mm		2,642
				Steering Radius (outside)	m		13.87
				Steering Angle	°		38
				Fuel Tank Capacity	L		416

** All technical data are theoretical values and specification are subject to change without prior notice.

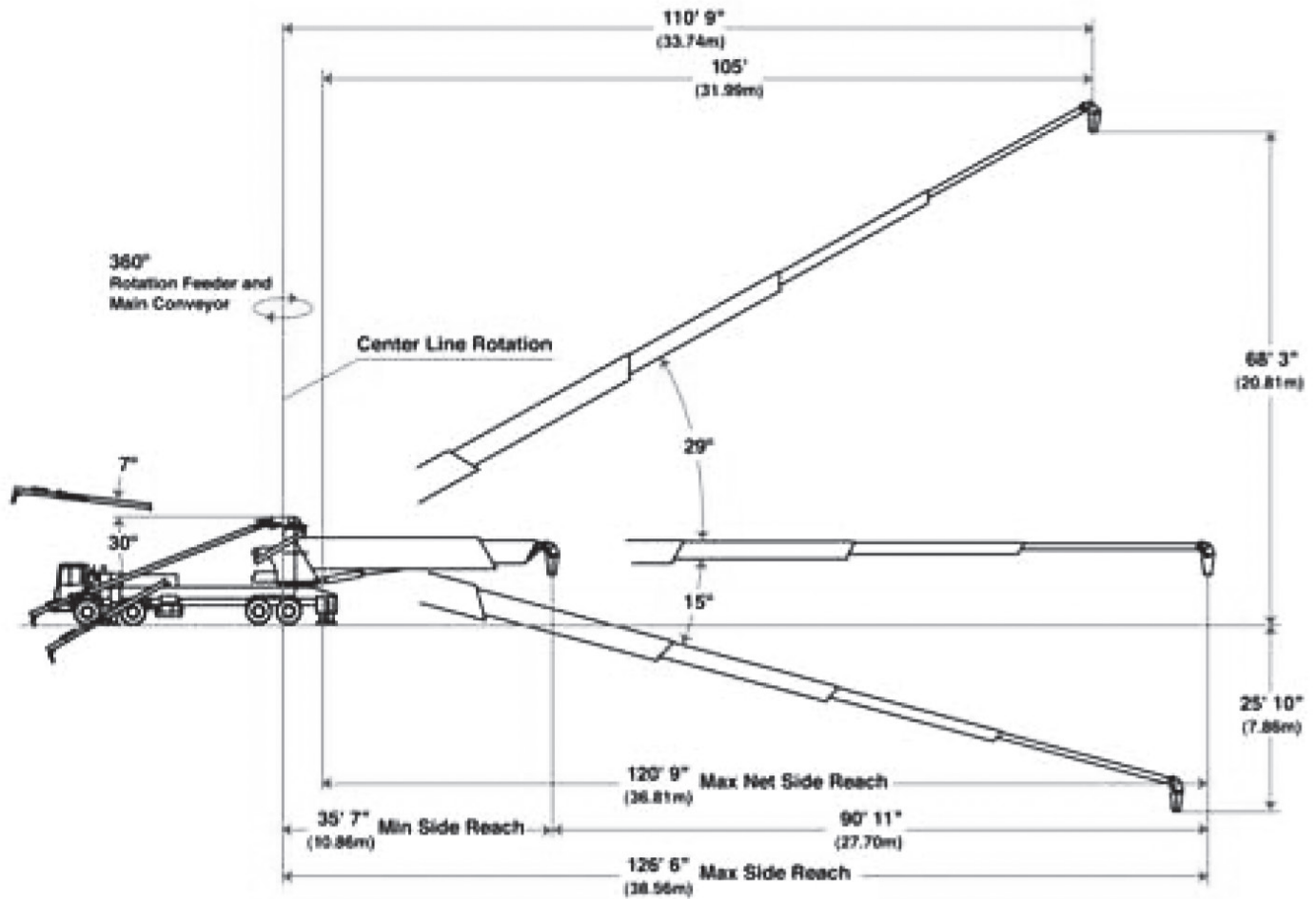
** Manufactured & Supplied by PUTZMEISTER.

DATA SHEET

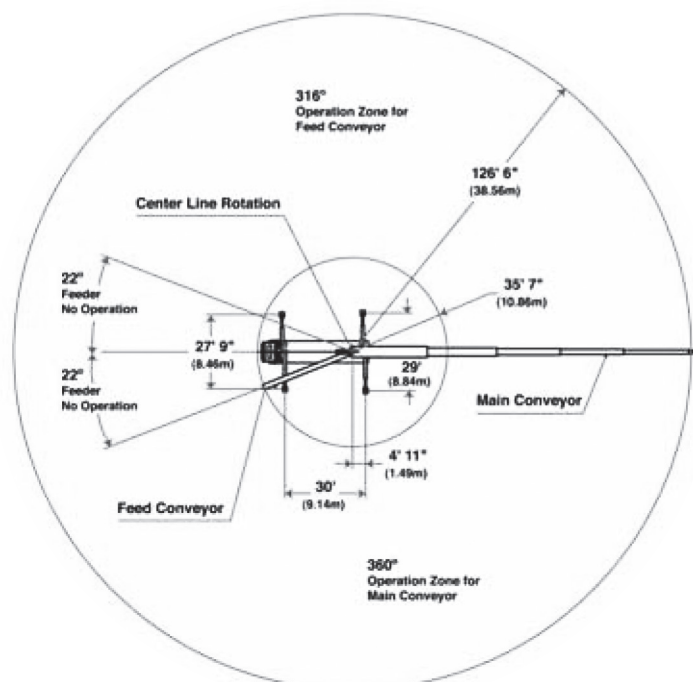
TELESCOPIC BELT CONVEYOR TB130



WORKING DIAGRAM



OUTRIGGER SPAN



** All technical data are theoretical values and specification are subject to change without prior notice.

** Manufactured & Supplied by PUTZMEISTER.